



# Risk Assessment workflow in EFSA: How it works in practice

Davide Arcella

6<sup>th</sup> October 2015

1<sup>th</sup> Croatian Food Safety Risk Assessment  
Conference



# THIRTEEN YEARS OF EFSA

**EFSA  
established**

Regulation 178/2002



**150**

Parma

**2002**

**2003**

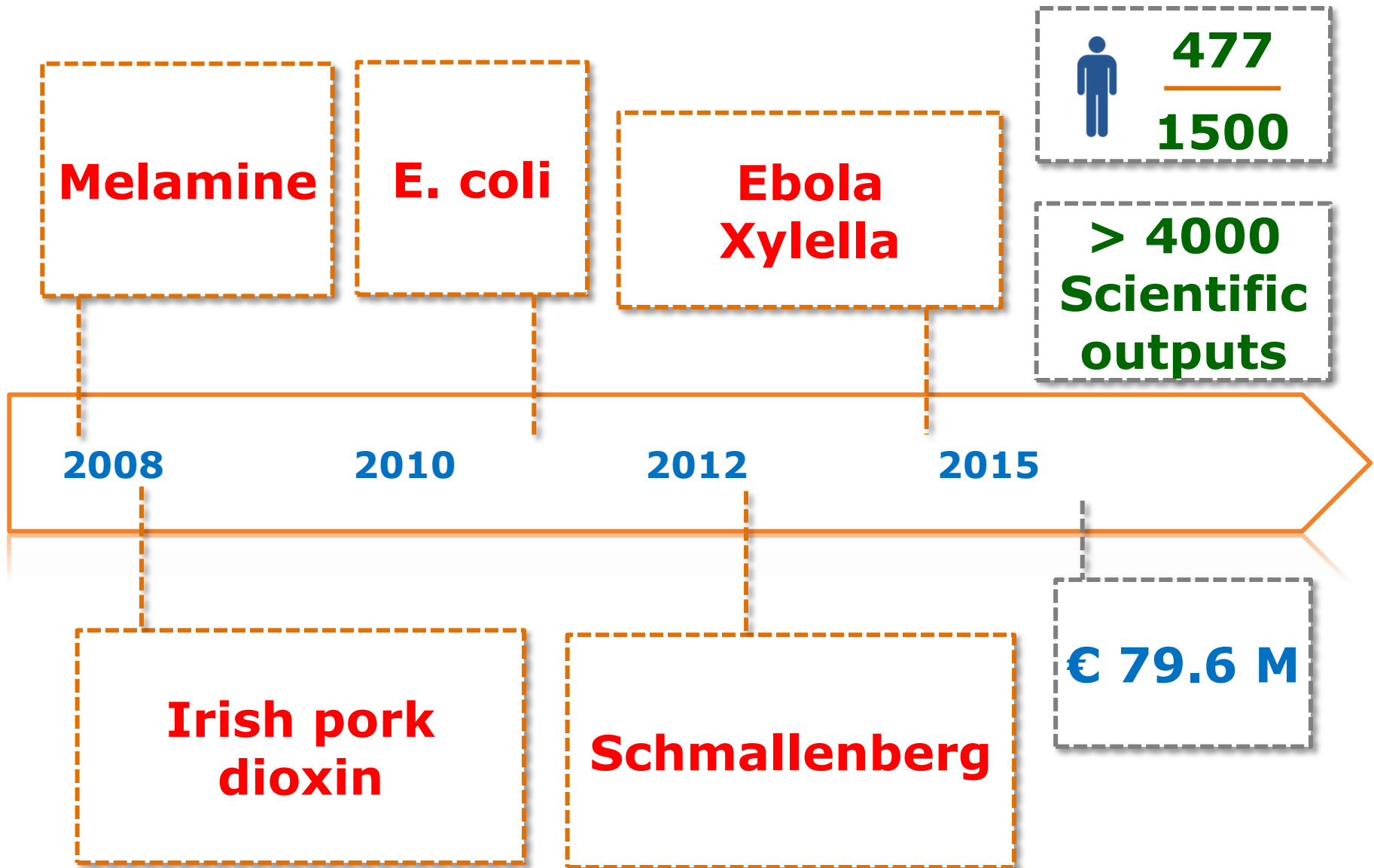
**2005**

**2007**

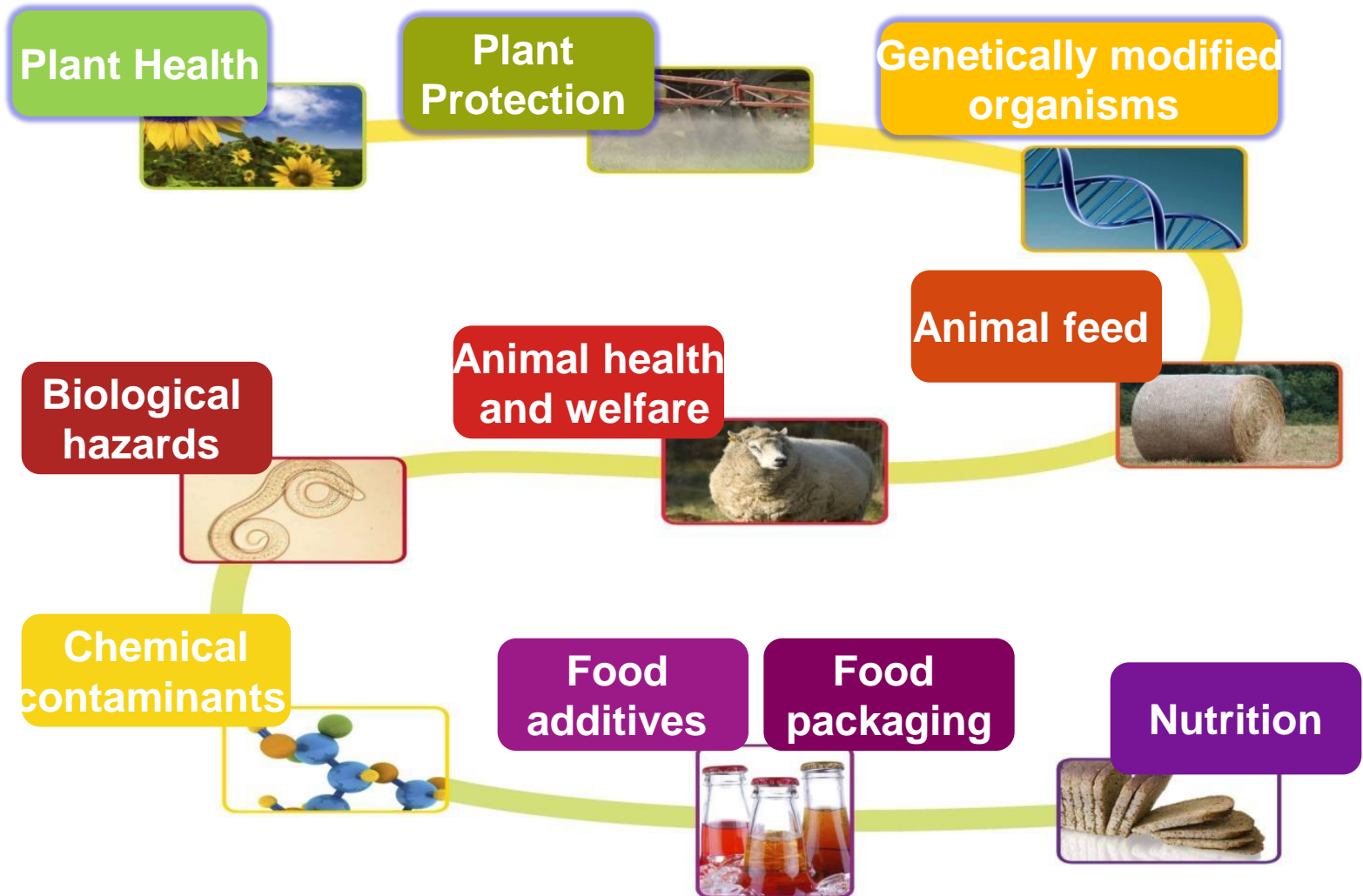
**Food scares  
(BSE, Belgian  
chicken dioxin)**

**1<sup>st</sup> Scientific  
assessment**

# THIRTEEN YEARS OF EFSA

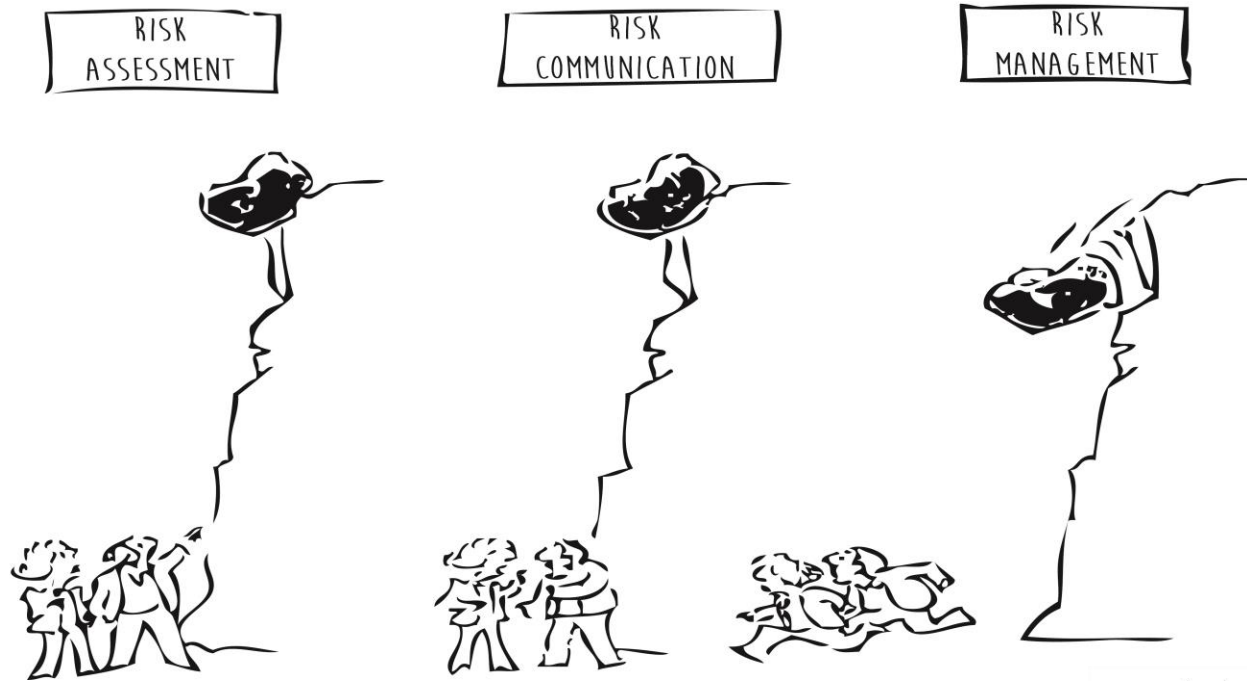


# SCIENTIFIC FIELDS



# RISK ANALYSIS MODEL AT EU LEVEL

## BREAKDOWN OF ROLES







# EFSA DOES NOT DO..

## POLICY, MANAGEMENT, CONTROL

**Develop food safety policies and legislation**



**Adopt regulations or authorise marketing of new products**

**Enforce food safety legislation**

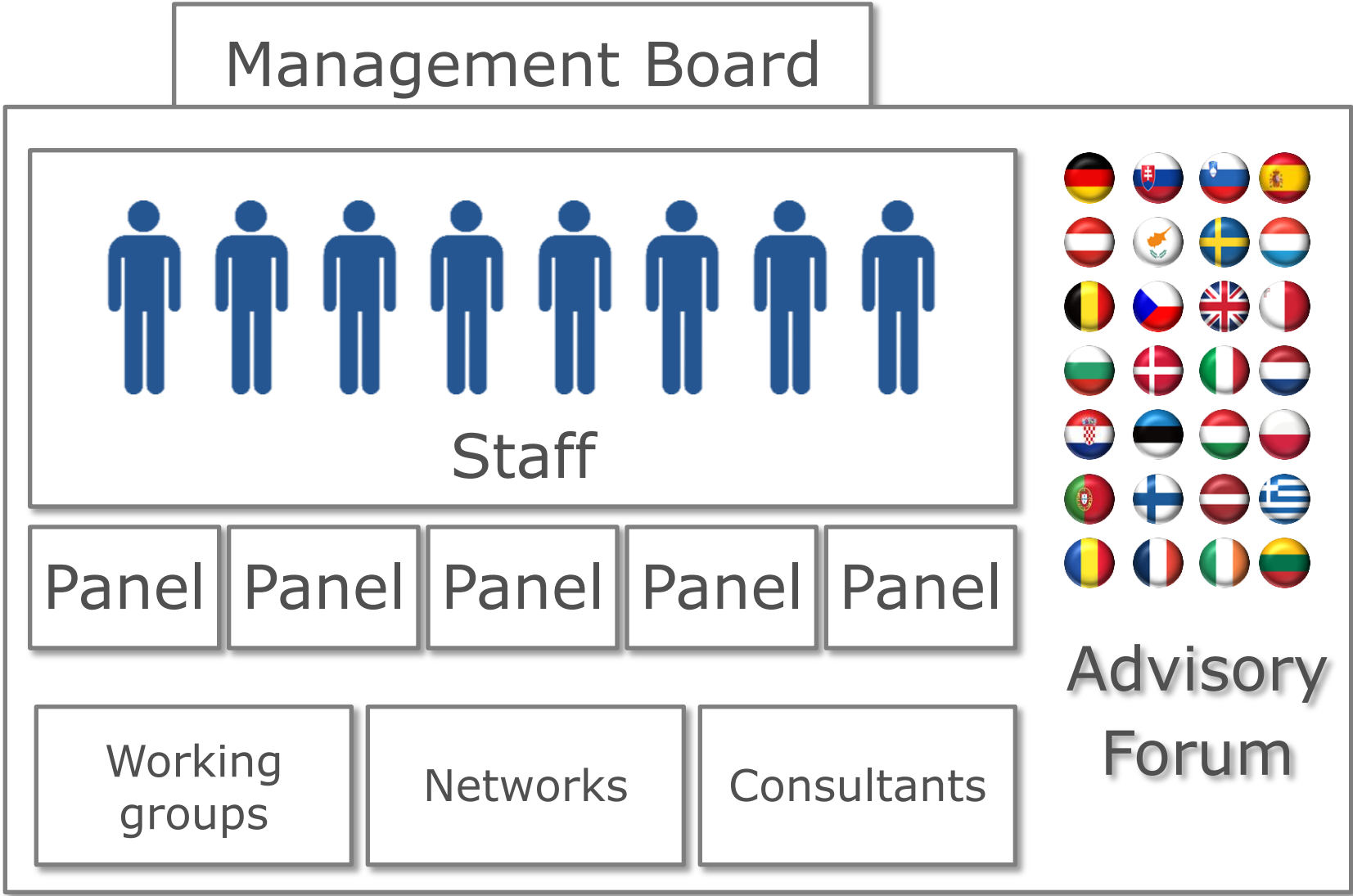


**Take charge of food safety/quality controls or labeling**





# EFSA GOVERNANCE AND WORKFORCE



Management Board



Staff

Panel

Panel

Panel

Panel

Panel

Working groups

Networks

Consultants



Advisory Forum

# MANAGEMENT BOARD

## Composition

15 Independent Members: they do not represent Member States or EU Institutions (except for 1 Member representing the European Commission)

## Role

- Check overall adherence to mission
- Budget, Work programmes, Implementation, reporting
- Appointing authority: Executive Director, Scientific Committee and Panels
- Is **NOT** involved in producing or adopting scientific opinions





# SCIENTIFIC COMMITTEE AND PANELS

## Scientific Panels

- 10 Scientific Panels (thematic remit)
- 21 scientists selected on the basis of proven excellence
- Open meetings, transparent work
- Mandatory commitment to independence



## Scientific Committee

- 10 Chairs of Scientific Panels plus 6 top level independent scientists
- Horizontal scientific issues, consistency of scientific opinions, harmonised methodologies

# ADVISORY FORUM

## Composition

- 28 Representatives of national food safety authorities
- European Parliament and Commission represented as observers
- Special invitees: accession countries  
Observer status: Switzerland and Norway



## Role

- Advise on programming and organising the scientific work
- Support scientific cooperation, sharing of information and best practices
- Ensure coherence, avoid divergent views, prevents duplication of effort
- Help identifying emerging risks



# EFSA STAFF

## Role

- Support the work of Scientific Committee and Panels
- Coordinate cooperation activities with Member States for data collection, preparatory work networking of experts and national institutes
- Responsible for producing scientific advice in specific circumstances (e.g. self tasking, urgent advice)
- Communication activities



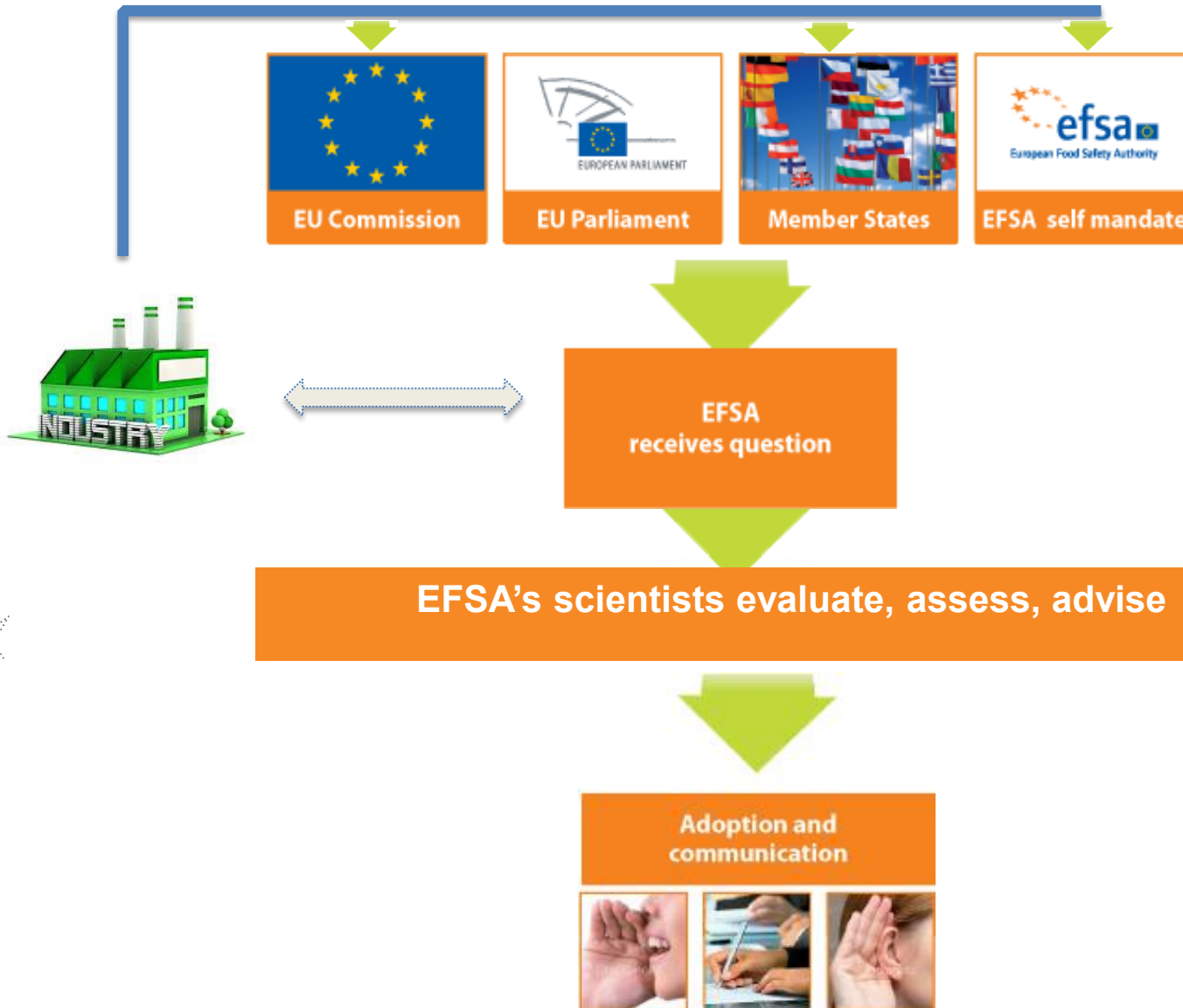


# COLLABORATING ACROSS THE WORLD

- 1,500 experts
- National food safety organizations (Europe + international)
- International organizations
- 400 research institutes
- EU Agencies



# WHO TASKS EFSA





## OPINION WORKFLOW

**Receipt of mandate application**

- Panel attribution
- Working group selection
- Screening declarations of interest

**Assessment**

- WG meeting discussion
- Collection of data
- Draft opinion

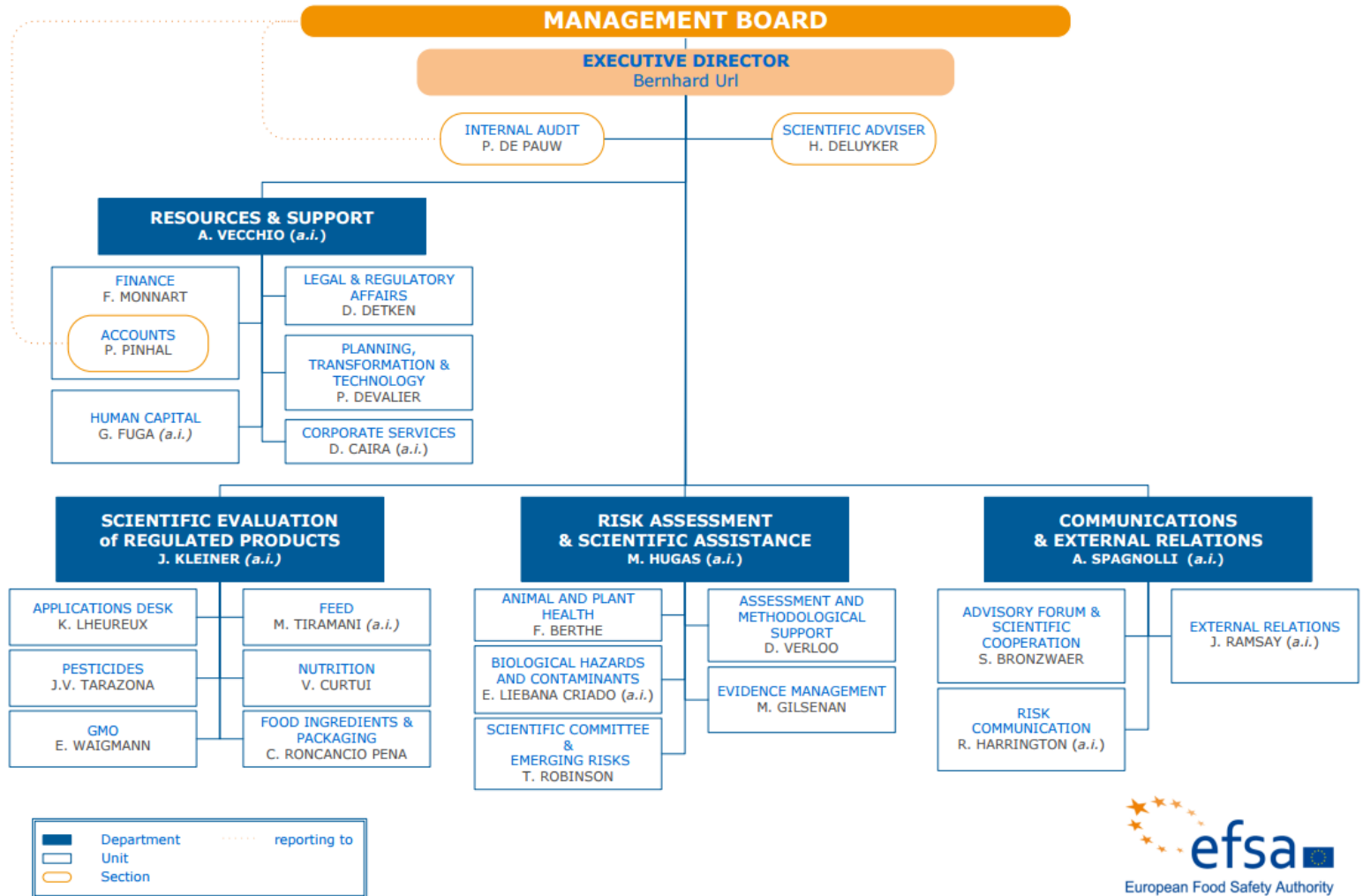
**Adoption and Communication**

- Panel meeting discussion
- Adopted opinion (public consultation)
- Press releases and web stories

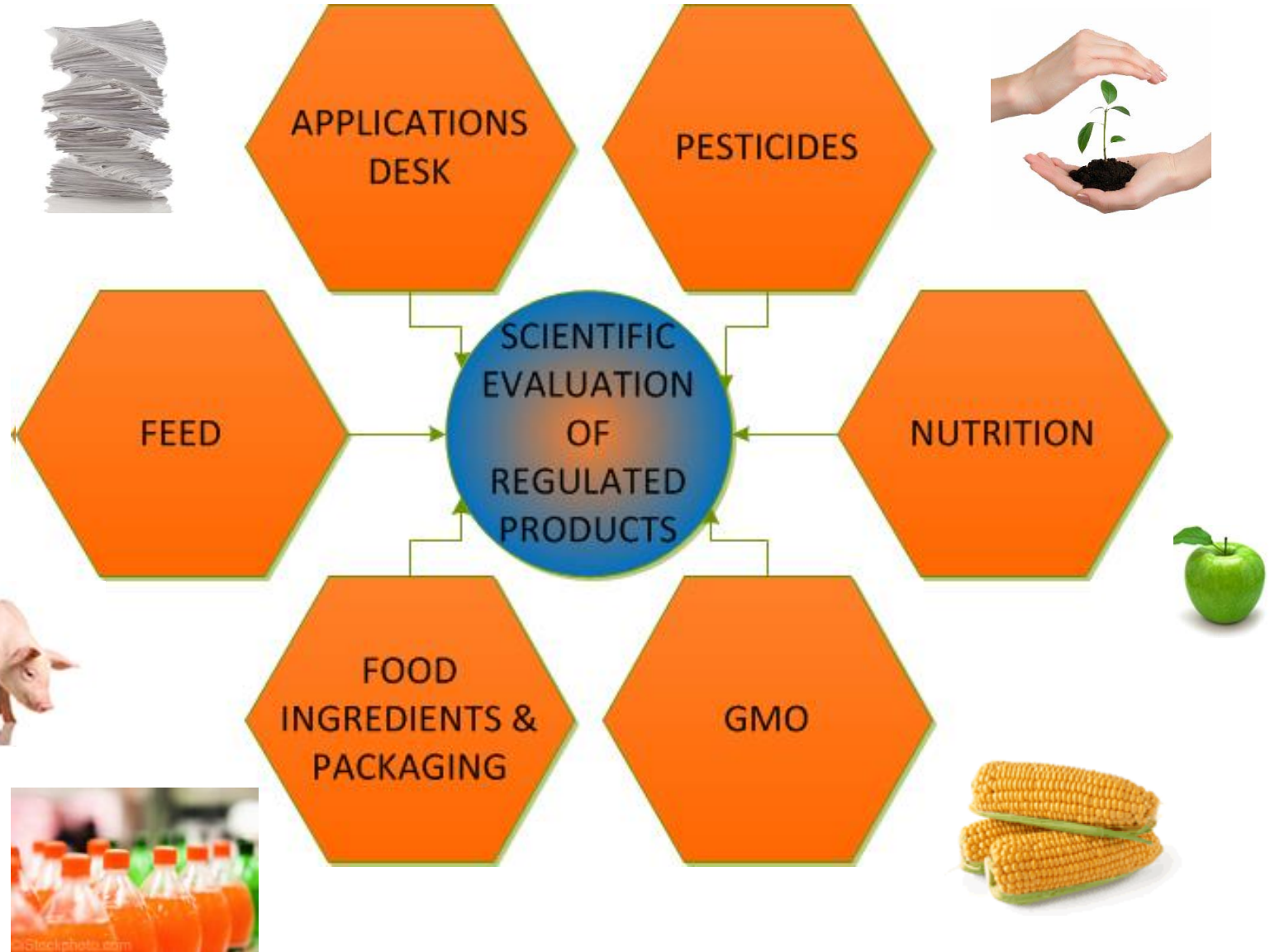




# EFSA'S ORGANIZATIONAL STRUCTURE



# REPRO DEPARTMENT



# RASA Department



BIOCONTAM

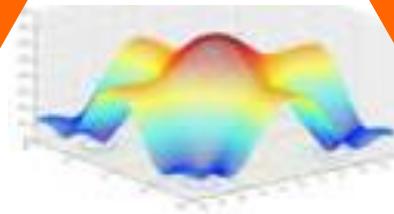
DATA

SCER

RASA

ALPHA

AMU





## MAIN CHALLENGES



Innovation and advances in science



Increasing public interest and scrutiny by industry and consumer organizations



Increasing workload and new risks, pressure on resources

Driving towards

**Efficiency, more guidance, better services, ...**

**Transparency, access to data, ...**





Thank you!